



## Summary

Wonderware Enterprise Integrator 2012 offers reliable plant-to-enterprise integration capabilities for linking Wonderware MES, InBatch, and EMI applications with enterprise systems to work in a complementary fashion that is loosely coupled yet extremely reliable.

## Business Value

Wonderware Enterprise Integrator allows you to remove point to point integration, leveraging a flexible, standards-based integration methodology to support corporate standards, lessen IT burden, and maintain uptime and productivity if a system downtime should occur.



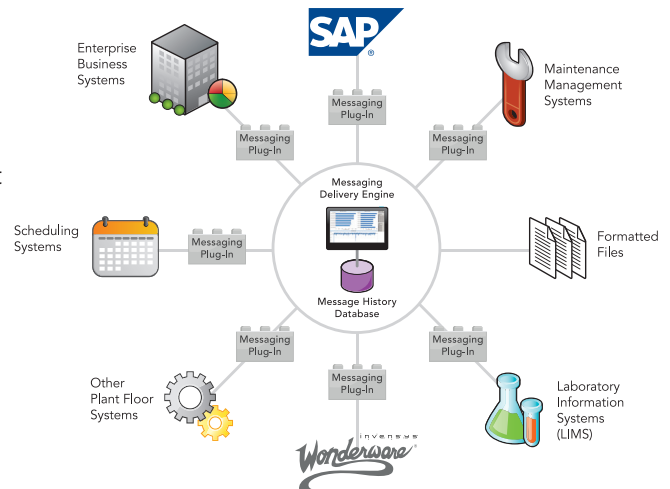
# Wonderware Enterprise Integrator 2012

## CONNECTING THE PLANT FLOOR WITH BUSINESS SYSTEMS

Wonderware Enterprise Integrator offers powerful site to enterprise integration capabilities for linking Wonderware Software or ArchestrA System Platform based applications and additional third party software applications with enterprise systems including Enterprise Resource Planning (ERP), Product Lifecycle Management (PLM), Supply Chain Management (SCM) or Laboratory Information Management Systems (LIMS). The software facilitates automatic exchange and transformation of production-related information. It helps to manage abnormal situations like interrupted connections or loss of data by automatic store and forward and allows users to resend or adjust transactions, based on a full detailed message history.

## INTEGRATION SCENARIOS

Typical integration scenarios include connecting business systems with Wonderware MES Software, Wonderware InBatch, Wonderware Intelligence, and ArchestrA System Platform. In fact, it is possible to connect any business system or additional third party automation application on the shop floor. Wonderware Enterprise Integrator allows you to connect multiple applications, so one consistent approach for plant to enterprise integration is adopted, eliminating isolated silos of information and high maintenance point-to-point integrations, and reducing IT maintenance costs.



## BENEFITS

- Increased manufacturing supply chain efficiency through reliable and optimized information flow between the shop floor, MES, ERP and peripheral business systems
- Enables business continuity on the shop floor loosely coupling your plant floor applications to the ERP
- Enables the deployment of a consistent Plant to Enterprise integration IT strategy throughout the enterprise
- Fosters standards and discipline for information management: eliminates duplicate entry of data (BOMs, Recipes, etc.) and enables information stewardship to appropriate people and systems

## FEATURES

- Reliable system-to-system and plant-to-enterprise information exchange: Mediates and guarantees information exchange between systems
- Provides 'Store & Forward' capability enabling fast recovery from system interruptions
- Management of custom data transformation, with data translation and system connectivity through plug-ins
- Comprehensive message history for sophisticated error handling and business continuity

Support for industrial standards:

- Flexible message delivery capabilities including Web Services, File Drop, FTP, MSMQ, XML, HTTP, and SOAP
- Supports B2MML message definitions based upon ISA-S95 standards
- Message repository leveraging Microsoft® SQL Server™

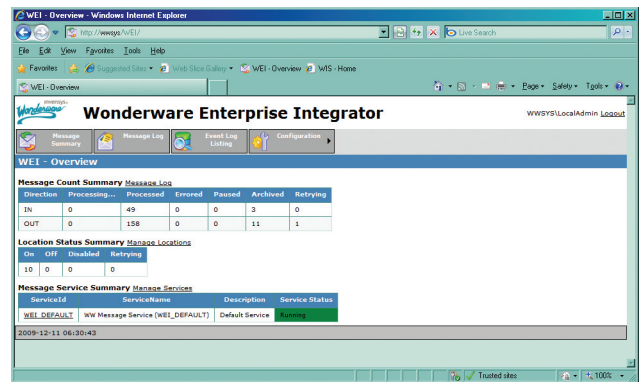
Ease of use for configuration and administration:

- Web based user interface provides simplified user access for system monitoring, manual operator intervention and configuration menus
- OS- based security; users and user groups can be associated with privileges required for any action a user or role might need to perform

## EXTENSIBILITY

Most enterprise integration projects require connections to specific systems or transforming additional messages. Wonderware Enterprise Integrator provides the ability to extend its rich functionality through reusable plug-ins.

A plug-in is developed according to the needs of a specific integration scenario, decoupling Wonderware Enterprise Integrator's core functionality of message handling and delivery from necessary transformations that may vary depending on the Business System or Wonderware MES application configuration. Plug-ins can also be developed to provide default connectivity to business applications such as SAP, Microsoft Dynamics or Oracle. Once a plug-in is created, it can be easily reused with other installations of Wonderware Enterprise Integrator to support company standards within multi-site integration rollouts.



For more information on Wonderware Enterprise Integrator, please contact your local Invensys sales person, or visit our website, [www.iom.invensys.com](http://www.iom.invensys.com).



Invensys Operations Management • 5601 Granite Parkway III, #1000, Plano, TX 75024 • Tel: (469) 365-6400 • Fax: (469) 365-6401 • [iom.invensys.com](http://iom.invensys.com)

Invensys, the Invensys logo, Archestra, Avantis, Eurotherm, Foxboro, IMServ, InFusion, SimSci-Esscor, Skelta, Triconex, and Wonderware are trademarks of Invensys plc, its subsidiaries or affiliates. All other brands and product names may be the trademarks or service marks of their representative owners.

© 2012 Invensys Systems, Inc. All rights reserved. No part of the material protected by this copyright may be reproduced or utilized in any form or by any means, electronic or mechanical, including photocopying, recording, broadcasting, or by any information storage and retrieval system, without permission in writing from Invensys Systems, Inc.

Rev. 03/12 PN WW-4134